

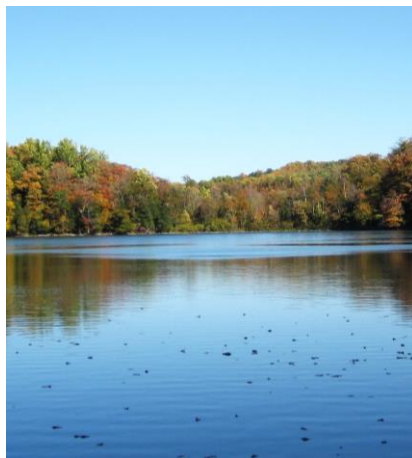
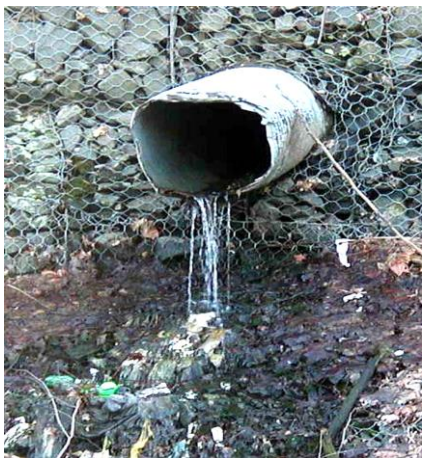
Clean Streets = Clean Streams



**When trash & pollutants
end up in storm drains...**



**...they go straight into
our vital waterways**



Storm drains are the physical link between land use and water quality. They divert rainwater runoff from roads and parking lots into local waterways to prevent flooding and accidents. > **Storm drains in Rockland County carry runoff directly to the nearest stream, lake, wetland, river, or reservoir.** > Unfortunately, as water travels to a storm drain some unsavory characters often “hitch a ride.” > Cigarette butts, trash, gasoline/oil, lawn chemicals, road salt and dirt are just some of the contaminants that turn innocent “runoff” into “non-point-source” water pollution – clogging drains, degrading ecology and threatening water quality, wildlife and public health.

Things YOU Can Do to Prevent Stormwater Runoff Pollution:

1. Never dump anything down storm drains
2. Use fertilizers sparingly; avoid pesticides; learn about Integrated Pest Management
3. Compost your yard waste
4. Sweep up driveways, sidewalks & roads
5. Vegetate bare spots in your yard; plant a raingarden
6. Direct downspouts away from paved surfaces; collect rainwater in a rain barrel
7. Check car for leaks; recycle motor oil
8. Take your car to the car wash (instead of washing in the driveway)
9. Pick up after your pet
10. Have your septic tank pumped and system inspected regularly

More On Cleanups and Storm Drain Marking
www.KeepRocklandBeautiful.org
Or call: (845) 708-9164

PLUS
**Join a Cleanup &
Help Mark Storm Drains
in Your Area!**

